

Choosing Course Instructional Methods

PHSC offers courses in six different instructional methods. Here is the information to help you choose the one that is best for you.



On Campus

Meets on campus on the day(s) and time(s) listed on the schedule.



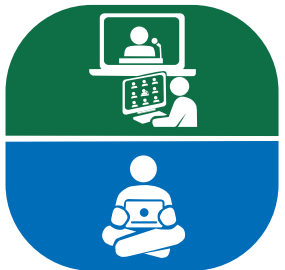
Hybrid-On Campus

Meets on campus on the day(s) and time(s) listed on the schedule, and the remainder of the course is delivered with online materials, assignments and activities.



Online

The course is delivered with online materials, assignments and activities.



Hybrid-Remote

Meets virtually on the day(s) and time(s) listed on the schedule, and the remainder of the course is delivered with online materials, assignments and activities.



Remote/Face-to-Face

Meets on campus and virtually on the day(s) and time(s) listed on the schedule.



Remote

Meets virtually on the day(s) and time(s) listed on the schedule.

How do I search for instructional methods in the course schedule?

1. Navigate to the bottom of phsc.edu and click on "Course Schedule."
2. Select the Term you want to search.
3. Click "Advanced Search" and filter courses by Instructional Methods.